

● SINGLE ● USE LENSES



- Safe, no-hassle infection control compliance
- Always new, always exceptional optics
- Individual sterile pouch - ideal for clinic or surgery



katena®

A close-up photograph of a person's eye with a contact lens being inserted. The eye is blue and has long, dark eyelashes. The contact lens is clear and has a textured, wavy edge. The person's hand is visible, holding the lens near the eye. The background is a soft, out-of-focus blue.

SINGLE USE LENSES

All lenses (except 4 Mirror) have a custom anti-reflection surface and can be used with the appropriate therapeutic lasers.



K30-1015 SINGLE MIRROR LENS

A lens for diagnostic, surgical and therapeutic procedures including SLT, offering an excellent view of the anterior chamber angle. Image and laser spot magnification of 1.0x. The mirror is wider and flatter than existing lens designs.



K30-1005 4 MIRROR LENS

A diagnostic lens with four 64° mirrors for efficient visualization of the angle with minimal lens manipulation and a central optic for viewing the posterior pole. Image magnification of 0.8x. Also available with handle.



K30-1320 RETINA 90 LENS

Primarily designed to facilitate diagnosis and treatment of diabetic eye disease and age-related macular degeneration, this lens offers a 1.0x magnified view within the region of the arcades. Laser spot magnification of 1.0x.



K30-1000 3 MIRROR LENS

A general purpose lens that has a central optic for viewing the posterior pole and mirrors for viewing/treating the anterior chamber angle, peripheral and arcades regions. Image magnification 0.93x and laser spot magnification 1.08x. Mirrors are wider and flatter than existing lenses on the market, offering exceptional optics.



K30-1110 FUNDUS LENS

This lens was designed to provide a central 0.93x magnified view for observation of the macula and optic nerve head area. Laser spot magnification of 1.08x.



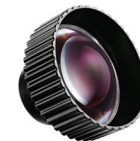
K30-1310 RETINA 170 LENS

This lens offers a wide-angle view and can be used for pan-retinal photocoagulation and for treatment of age related macular degeneration. Indirect image magnification 0.52x and laser spot magnification of 1.92x.



K30-1120 CAPSULOTOMY LENS

Large diameter optic is more than twice the standard, allowing treatment outside the visual axis of the patient. Image magnification factor 1.8x and laser spot magnification 0.56x. Exceptional optics with no risk of the magnifying lens detaching.



K30-1300 RETINA 180 LENS

This lens offers an exceptional wide-angle view up to the ora serrata. Indirect image magnification of 0.8x and high definition, broad field view of the fundus. Used to treat diabetic eye disease, particularly pan-retinal photocoagulation and age-related macular degeneration, it has laser spot magnification of 1.25x.



K30-1002 SMALL 3 MIRROR LENS

The small 3 mirror lens offers eye care providers a choice of single use 3 mirror lenses without sacrificing the exceptional optics of Katena's comprehensive lens selection. Excellent all-purpose lens specially sized for smaller palpebral fissure & pediatric patients. Image magnification 0.93x and laser spot magnification 1.08x.



K30-1130 IRIDOTOMY LENS

Designed with a large diameter optic to view/treat structures of the peripheral iris. Larger diameter magnifying optic has a wider view than existing lens designs and offers great latitude in therapy positioning. Image magnification 1.6x and laser spot magnification 0.63x. Outstanding optics with no risk of the magnifying lens detaching.



K30-1330 RETINA 200 LENS

This lens represents a breakthrough in lens optics. The optical design of the lens permits imaging and treatment of the far peripheral retina with less distortion, and observation of the retina including the ora serrata. An excellent lens for PRP. It has a laser spot magnification of 1.67x, 0.6x image magnification, and a 200° field of view.