



EagleVision[®] PUNCTUM PLUGS

Punctum Plugs

OPHTHALMOLOGY

 corzamedical

For physicians and healthcare facilities seeking the highest standards. Corza Medical provides an extensive range of ophthalmic punctum plugs.



EagleVision[®] PUNCTUM PLUGS

EagleVision was founded by Jerre Freeman, MD, in 1983. He invented and patented the world's first Punctum Plug nine years earlier, in 1974. Driven by excellence, EagleVision has become the brand that is synonymous with punctum plugs across the globe.

The first tapered shaft plugs were developed in 1994 and the first low profile rim plugs in 1998. Since this time EagleVision has continued to invest in new designs to provide improved patient comfort and fit.

Now, under Corza Medical, EagleVision continues to be the most trusted brand name in the global punctum plug market.

Table of Contents

	Page Number
Long-Term Plugs	4 - 6
Flow Controllers	7
Temporary Plugs	8
Gauge System	9
Plug Forceps	9
Notes	10

SuperEagle®

The Simple Solution for Dry Eye

A versatile solution for effective dry eye management, available in small, medium, and large sizes to meet the unique needs of every patient.

Tapered shaft and pivoting wide-flex nose allow for better retention.

2 individually sterile packaged, pre-loaded on a disposable inserter/dilator for ease of use.



Part #	Diameter	Length
31302	0.4 – 0.6mm (small)	1.4mm
31312	0.6 – 0.8mm (medium)	1.7mm
31322	0.8mm+ – (large)	1.7mm

EaglePlug®

The original Tapered-Shaft™ punctum plug

The pioneering solution in ocular care that sets the standard for effective dry eye management.

Thoughtfully designed plug features our original patented Tapered-Shaft™ shape that ensures a secure fit and reliable tear retention.

Available in five different sizes, from 0.4mm to 0.8mm diameter, to provide the perfect fit.

2 individually sterile packaged, pre-loaded on a disposable inserter/dilator for ease of use.



Part #	Diameter	Length
30342	0.4mm	1.1mm
30352	0.5mm	1.2mm
30362	0.6mm	1.3mm
30372	0.7mm	1.4mm
30382	0.8mm	1.5mm

SuperFlex®

The next-generation flexible solution designed for comprehensive Dry Eye

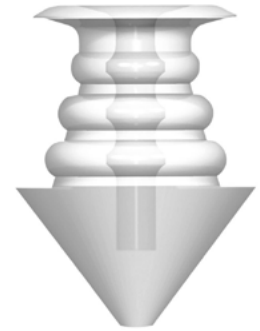
Featuring the latest flexible design that adapts seamlessly to individual anatomy, ensuring a secure fit while enhancing tear retention.

Lowest-profile rim and soft, low durometer silicone for enhanced patient comfort.

Contouring traction ribs provide ultimate flexibility for easy insertion and superior retention.

Available in eleven different sizes, from 0.3mm to 1.3mm diameter, to provide the perfect fit.

2 individually sterile packaged, pre-loaded on a disposable inserter/dilator for ease of use.



Part #	Diameter	Length
31732	0.3mm	1.1mm
31742	0.4mm	1.1mm
31752	0.5mm	1.2mm
31762	0.6mm	1.3mm
31772	0.7mm	1.4mm
31782	0.8mm	1.5mm
31792	0.9mm	1.7mm
31702	1.0mm	1.8mm
31712	1.1mm	2.0mm
31722	1.2mm	2.0mm
31802	1.3mm	2.0mm

EagleFlex®

The original flexible Tapered-Shaft™ punctum plug

Contouring traction ribs provide ultimate flexibility for easy insertion and superior retention.

Available in six different sizes, from 0.4mm to 0.9mm diameter, to provide the perfect fit.

2 individually sterile packaged, pre-loaded on a disposable inserter/dilator for ease of use.



Part #	Diameter	Length
30742	0.4mm	1.1mm
30752	0.5mm	1.2mm
30762	0.6mm	1.3mm
30772	0.7mm	1.4mm
30782	0.8mm	1.5mm
30792	0.9mm	1.6mm

Plug1®

The one-size solution for Dry Eye

Unique dual-lobed design allows the plug to fit a wide range of Punctum sizes.

Ideal option for users with very low and intermittent demand for Punctum Plugs.

Manufactured from a soft grade of medical silicone to enhance patient comfort.

2 individually sterile packaged, pre-loaded on a disposable inserter/dilator for ease of use.



Part #	Diameter	Length
30012	0.5 – 0.8mm	1.4mm

EaglePlug® TearFlow™

Designed with an opening up to 150% larger than traditional flow controllers

Design that maximizes tear drainage and retention ensuring optimal moisture for enhanced patient comfort.

Tapered plug featuring a unique design that ensures secure placement and effective tear retention.

Ideal for patients seeking relief from dry eye symptoms when total punctal occlusion is too much.

2 individually sterile packaged, pre-loaded on a disposable inserter/dilator for ease of use.



Part #	Outside Diameter	Inside Diameter	Length
3005	0.5mm	0.2mm	1.2mm
3006	0.6mm	0.3mm	1.3mm
3007	0.7mm	0.3mm	1.4mm
3008	0.8mm	0.3mm	1.5mm
3009	0.9mm	0.4mm	1.6mm
3010	1.0mm	0.5mm	1.8mm

Tapered Shaft™

The original innovative solution designed for precise ocular flow management

Ideal for patients seeking relief from dry eye symptoms when total punctal occlusion is too much.

Engineered for optimal performance and patient comfort.

Tapered plug featuring a unique design that ensures secure placement and effective tear retention.

2 individually sterile packaged, pre-loaded on a disposable inserter/dilator for ease of use.



Part #	Outside Diameter	Inside Diameter	Length
30652	0.5mm	0.2mm	1.4mm
30662	0.6mm	0.2mm	1.4mm
30672	0.7mm	0.2mm	1.7mm
30682	0.8mm	0.2mm	1.9mm

DuraPlug®

Reliable solution for extended short-term Dry Eye relief

Ideal for short-term use, allowing providers to offer immediate relief for patients, whether due to environmental factors, post-surgery recovery, seasonal dry eye, or ocular retention.

Duraplug extended temporary plugs are effective between 60 - 180 days.

Supplied: 2 sterile inserts per package; 10 packages per box. Total of 20 inserts.



Part #	Diameter	Length
0076	0.2mm	2.0mm
0077	0.3mm	2.0mm
0078	0.4mm	2.0mm
0079	0.5mm	2.0mm

Collagen Plug

Short-term temporary option for Dry Eye relief

A cost effective way to evaluate the benefits of long-term or extended punctual occlusion.

Effective for 3-5 days; dissolves completely in 7-10 days.

Supplied: 6 collagen insert plugs per sterile foam pack, 10 packs per box. Total of 60 plug inserts.



Part #	Diameter	Length
0025	Insert 0.2mm	2.0mm
0026	Insert 0.3mm	2.0mm
0027	Insert 0.4mm	2.0mm
0052	"Shorts" 0.2mm	1.6mm
0053	"Shorts" 0.3mm	1.6mm
0054	"Shorts" 0.4mm	1.6mm

Punctal Gauge

A Complete Gauging/Dilating System In One Instrument

Accurately measures puncta for ideal plug fit, with clear markings and 0.5 – 1.0mm dilation

2040



Plug Forceps

Gold Forceps

Katena Punctal Plug Forceps
0.2mm wide longitudinal groove inside jaws pointed tips
Reusable

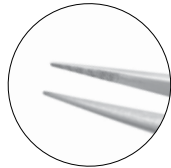
K5-6218



Jewelers Forceps

Katena Removal Forceps
very fine pointed tips
with textured jaws
Reusable

K5-6575



Jewelers No. 7 Forceps

Blink Sharply Curved Forceps
Single-Use

11-2007





Order Online: corzaeye.com

Order by Phone: 800-225-1195

For more information, visit corzaeye.com

Distributed by Corza Ophthalmology, (Katena Products Inc)

Corza Ophthalmology (Katena Products, Inc.), 6 Campus Drive, Suite 310, Parsippany, NJ 07054, USA
Phone: 973.989.1600, Toll free (USA only): 800.225.1195, Fax: 973.989.8175

All trademarks are owned by the company and its affiliates.
©2024 Corza Medical All Rights Reserved. EAG-CAT-291124 Rev 2