

Barron Vacuum Donor Alignment Punch®

The Barron Vacuum Donor Alignment Punch features a ring laser etched on to the surface of the vacuum well to aid in the alignment of the healthiest tissue for donor tissue grafts. Surgical scars, areas with a low density of endothelial cells, and other unwanted tissue can now be easily avoided when preparing for all types of full or partial corneal transplants.

- Created from a solid rod of stainless steel for a seamless edge
- New micro-honed trephine blade provides a better cut and less cell death at the cut margin
- Laser etched circular marking indicates areas cut out by the trephine blade. This allows alignment to the healthiest donor tissue
- Punch sizes are now clearly marked on both the top and the side of the punch



Barron Vacuum Donor Alignment Punch

K20-2270	7.00mm	K20-2276	8.50mm
K20-2271	7.25mm	K20-2277	8.75mm
K20-2272	7.50mm	K20-2278	9.00mm
K20-2273	7.75mm	K20-2279	9.25mm
K20-2274	8.00mm	K20-2280	9.50mm
K20-2275	8.25mm		

Mitigate the risk of Endothelial Cell Loss (ECL) with Barron Corneal Punches [1] [2]

Barron Results

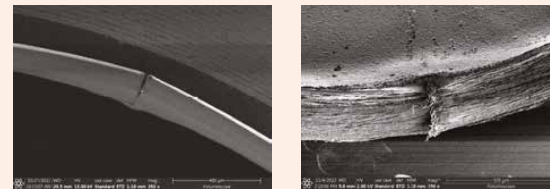
Blade Edge/Margin

Created from a solid rod of stainless steel for a seamless edge.



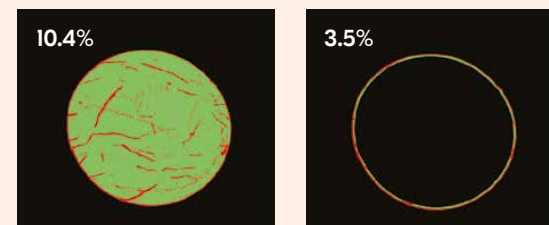
Competitor Results

Blade Edge/Margin

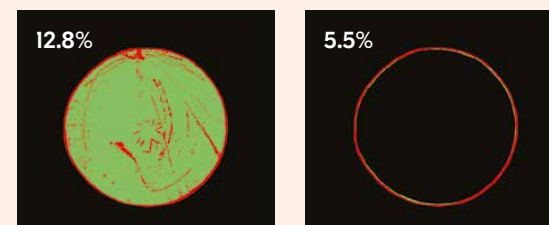


This advanced blade minimizes the risk of ECL compared to leading competitive options due to the seamless edge of the Barron Corneal Punch.

Barron Results



Competitor Results



[1] Peripheral Cell Death and Ultrastructural Studies of the New Generation Barron Punch and Moria Punch - by: Megan M.W. Stralko PhD, Khoa D. Tran PhD - December 2, 2022
 [2] EBCT, Volume 3, Number 1 - Qualitative Blade Topology in Donor Cornea Punches and Corresponding Endothelial Cell Loss in PK and DMEK Grafts - by: Megan M. W. Stralko PhD, Claudia S. López PhD, Rebecca Hubbs CEBT, Phillip K. Dye CEBT, and Khoa D. Tran PhD - March 2024

Barron® CORNEAL DEVICES

 **corzamedical**

Order Online: corzaeye.com
 Order by Phone: 800-225-1195

For more information, visit corzaeye.com

Distributed by Corza Ophthalmology, (Katena Products Inc)

Corza Ophthalmology (Katena Products, Inc.), 6 Campus Drive, Suite 310, Parsippany, NJ 07054, USA
 Phone: 973.989.1600, Toll free (USA only): 800.225.1195, Fax: 973.989.8175

All trademarks are owned by the company and its affiliates.
 ©2024 Corza Medical All Rights Reserved. COR-CATBAR-080524 REV0

Barron® CORNEAL DEVICES

Cornea Transplant Products

OPHTHALMOLOGY

 **corzamedical**

Barron Donor Cornea Punch® (with and without vacuum)

Barron has been a trusted name in ophthalmology for decades, known for pioneering innovations and setting industry standards. Our Barron Donor Corneal Devices are engineered for precision, providing the cleanest cuts with minimal peripheral cell death. The original non-vacuum donor punch is available for surgeons who do not use vacuum for tissue fixation. It encompasses all the features of the vacuum punch, without the vacuum tissue fixation.

Blade design

- Seamless edge crafted from a solid rod of stainless steel to reduce the chance of surgically induced astigmatism
- New micro-honed blade for superior cut quality and reduced cell death at the cut margin [1]

Tissue visualization

- Features an “open top” design
 - Improves tissue visualization prior to cutting
 - Decreases the risk of blade damage, reduces double cuts, and aids in precise alignment

Size confirmation

- Marked with the diameter of the blade on the top and sides of the punch

Vacuum seating (Vacuum Donor Punches only)

- Immobilizes tissue for a more perpendicular cut

Punch supplied

- Sterile; single-use disposable
 - Packaged fully assembled and ready for use
 - Gentian violet marking pen at no additional cost

Optimal intended use

- Surgeon self-preparation of donor corneal tissue
- Eye Bank preparation of donor corneal tissue



Vacuum Punches

K20-2100	6.00mm	K20-2108	8.00mm
K20-2102	6.50mm	K20-2109	8.25mm
K20-2103	6.75mm	K20-2110	8.50mm
K20-2104	7.00mm	K20-2111	8.75mm
K20-2105	7.25mm	K20-2112	9.00mm
K20-2106	7.50mm	K20-2113	9.25mm
K20-2107	7.75mm	K20-2114	9.50mm

Non-vacuum Punches

K20-2070	6.00mm	K20-2078	8.00mm
K20-2072	6.50mm	K20-2079	8.25mm
K20-2073	6.75mm	K20-2080	8.50mm
K20-2074	7.00mm	K20-2081	8.75mm
K20-2075	7.25mm	K20-2082	9.00mm
K20-2076	7.50mm	K20-2083	9.25mm
K20-2077	7.75mm	K20-2084	9.50mm

Barron Radial Vacuum Trepine®

The Barron Radial Vacuum Trepine® is used for cutting the transplant recipient’s cornea tissue. Recognized as the global standard in recipient trephines, the Barron Radial Vacuum Trepine® may be paired with the Barron Vacuum Donor Punch® for consistency of sizing and quality of cut.

Blade design

- Seamless edge crafted from a solid rod of stainless steel to reduce the chance of surgically induced astigmatism
- New micro-honed blade for superior cut quality and reduced cell death at the cut margin [1]

Vacuum chamber

- 360° suction chamber
 - 16 radial, symmetric divisions
 - Reduces cornea aspiration and graft distortion

Marking and visual alignment

- 16 radial indentations symmetrically mark the recipient bed for accurate alignment of sutures
 - Helps avoid surgically induced astigmatism
 - Divisions may be inked with a sterile marking pen to be clearly visible
 - Eliminates the need to purchase a second instrument
- Fine cross hairs are designed to assist in aligning with a pre-inked control corneal landmark

Calibrated cut

- Rotating mechanism advances the blade depth 0.25mm with each 360° rotation

Vacuum seating

- Securely holds the trephine in place for an optimal perpendicular cut



Vacuum Trephines

K20-2050	6.00mm	K20-2058	8.00mm
K20-2052	6.50mm	K20-2059	8.25mm
K20-2054	7.00mm	K20-2060	8.50mm
K20-2055	7.25mm	K20-2061	8.75mm
K20-2056	7.50mm	K20-2062	9.00mm
K20-2057	7.75mm		

Trepine supplied

- Sterile; single-use disposable
- Packaged fully assembled and ready for use
- Gentian violet marking pen at no additional cost

Optimal intended use

- Anterior lamellar or penetrating keratoplasty

Barron Artificial Anterior Chamber®

The first sterile disposable artificial anterior chamber

Ideally suited for surgeons who prefer to cut their own tissue, the Artificial Anterior Chamber can be used with the Radial Vacuum Trepine to create a more precise cut of the donor tissue by cutting the cornea from the epithelial side. This more closely approximates the angle of cut obtained with the Barron Trepine in the recipient cornea, minimizing surgically induced astigmatism; creating the best donor tissue to recipient bed match.

- Designed to securely hold a 14-18mm cornea graft, including scleral rim

- Two ports with pinch clamps for infusing viscoelastic, BSS, or air

- Bright blue color provides a contrasting back ground for visualizing the cornea

- Ideal option for:

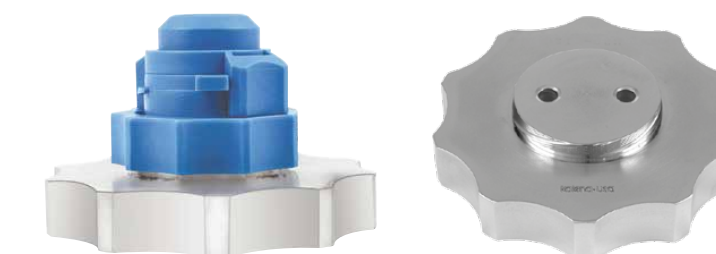
- Lamellar or penetrating keratoplasty or laser dissection
- Not compatible with a mechanical microkeratome



Item #: K20-2125

Stainless steel base

A heavy stainless steel base to stabilize the artificial anterior chamber during use is available. The base is reusable and autoclavable.



Item #: K20-2126